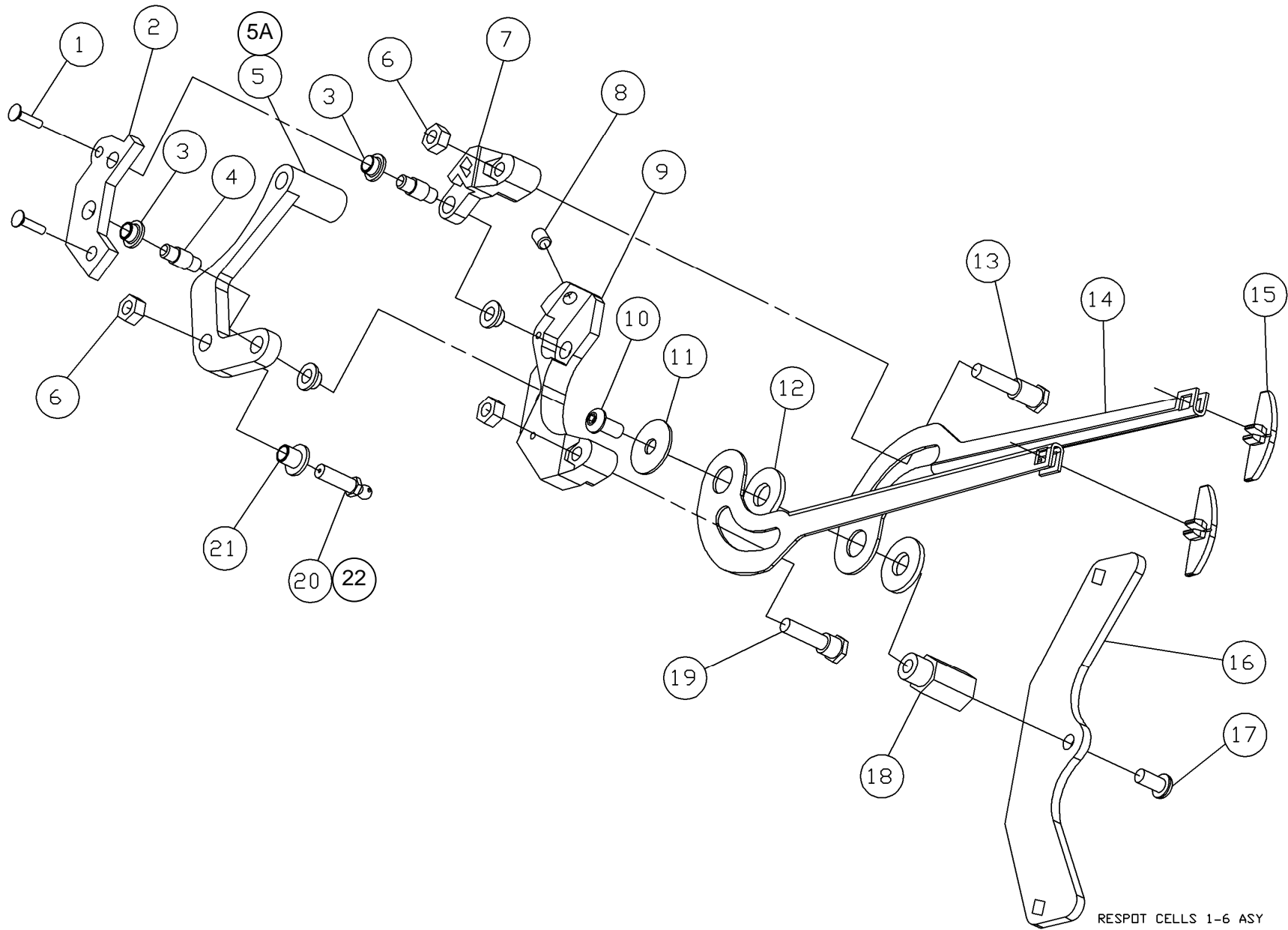


RESPOT CELL ASSEMBLY, CELLS 1 THROUGH 6





RESPOT CELL ASSEMBLY, CELLS 1 THROUGH 6

ITEM	QTY	PART #	DESCRIPTION	ITEM	QTY	PART #	DESCRIPTION
1	2	070-002-750	SCREW, FLAT HEAD				
2	1	070-002-695	YOKE PLATE				
3	4	070-002-630	FLANGED BEARING, .252 X .315 X .218				
4	2	070-002-645	LEVER ASSEMBLY SHAFT				
5	1	070-002-651	RESPOT LEVER				
5A	1	070-007-618	RESPOT LEVER ASSY (Includes Items 4, 5, & 21)				
6	2	844-049-002	NUT, STOVER LOCK, 1/4 - 20				
7	1	090-004-113	RESPOT YOKE ARM				
8	1	807-650-050	SETSCREW, 1/4 - 28 X 5/16				
9	1	090-004-118	RESPOT YOKE				
10	1	808-549-080	SCREW, BUTTON HEAD CAP, 1/4 - 20 X 1/2				
11	1	070-007-192	WASHER				
12	2	948-975-172	WASHER, FLAT, 1/2				
13	1	090-005-640	STUD, LONG				
14	2	090-004-119	RESPOT FINGER				
15	2	090-005-617	FINGER INSERT				
16	1	090-005-632	FINGER PIVOT WING				
17	1	809-149-100	SCREW, BUTTON HD w/PATCH, 1/4 - 20 X 5/8				
18	1	090-005-522	RESPOT FINGER BUSHING				
19	1	070-007-195	STUD, SHORT				
20	1	730-027-019	STUD, BALL HEAD				
21	1	070-002-653	FLANGED BEARING, .252 X .315 X .38				
22	1	088-005-524	STUD, BALL HEAD, 6-PIN LINK ONLY				