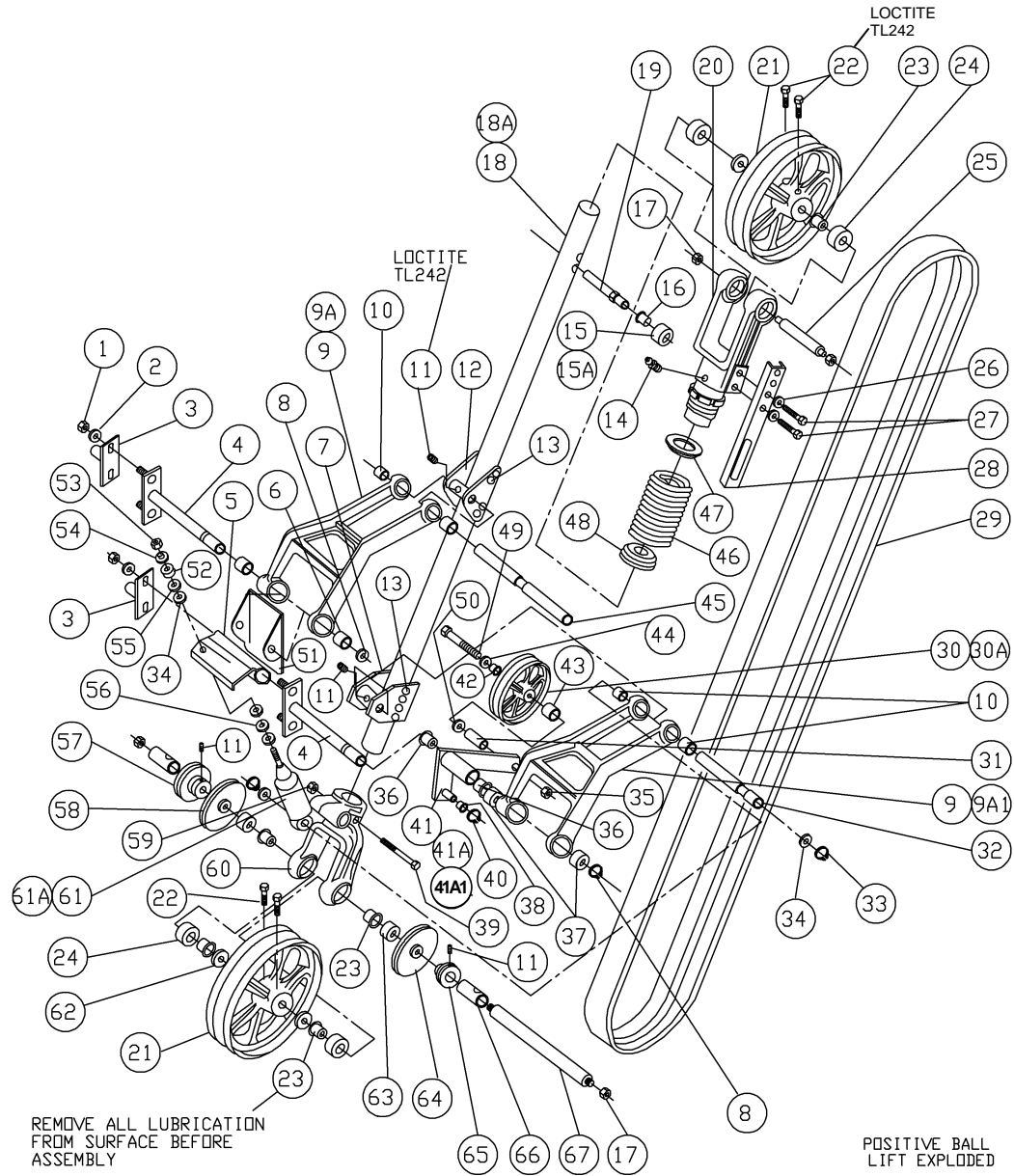


POSITIVE BALL LIFT (PBL) – EXPLODED VIEW

SECTION 5.0

Drawings & Parts Lists



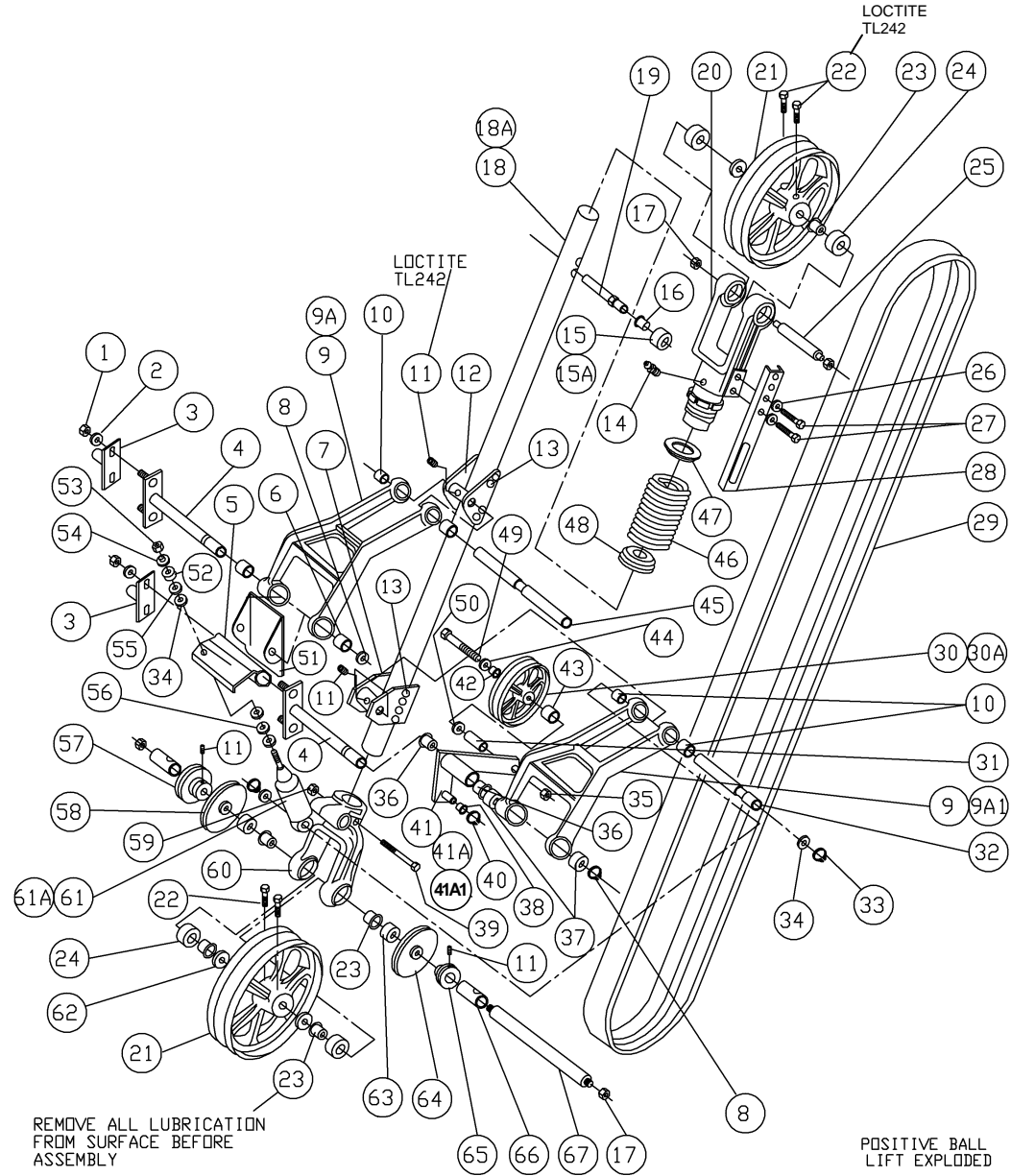


POSITIVE BALL LIFT (PBL) – EXPLODED VIEW

QubicaAMF XLi PINSPOTTER

ITEM	QTY	PART #	DESCRIPTION	ITEM	QTY	PART #	DESCRIPTION
1	4	840-057-002	NUT, STOVER LOCK, 5/16	20	1	070-001-995	UPPER YOKE w/NUT
2	4	948-761-112	WASHER, FLAT, 11/32 X 11/16 X 1/16	21	2	000-024-661	PULLEY
*3	2	070-006-320	SHAFT ASSY. ADJ. 9 ½" - 11" SPACING	22	4	806-265-160	SETSCREW, 3/8 - 16 X 1
	2	070-006-329	SHAFT ASSY ADJ. 11" - "12-5/8" SPACING	23	4	070-006-748	SPACER
	2	070-006-333	SHAFT ASSY. ADJ. 12-5/8" - 14" SPACING	24	4	070-006-699	BALL BEARING, .750 X 1.653
*4	2	070-005-325	SHAFT ASSY. FXD. 9 ½" - 11" SPACING	25	1	610-900-711	UPPER SHAFT
	2	070-006-328	SHAFT ASSY. FXD. 11" - "12-5/8" SPACING	26	4	951-164-002	WASHER, SPLIT LOCK, 3/8
	2	070-006-330	SHAFT ASSY. FXD. 12-5/8" - 14" SPACING	27	2	809-865-165	SCREW, HEX, 3/8 -16 X 1
5	1	070-011-289	SHOCK ABSORBER BRACKET	28	1	000-029-613	RAIL
6	2	900-112-203	SLEEVE BEARING, .753 X 1-1/4	29	1	088-001-233	BELT, NO-SLIP, V-GUIDE, FLAT
7	1	070-011-002	LOWER SUPPORT	30	1	see 30A	IDLER PULLEY
8	2	919-005-800	RETAINING RING	30A	1	000-021-408	IDLER PULLEY ASSY (includes 30 & 43)
9	2	see 9A & 9A1	LINK	31	1	070-008-218	SPACER, LONG
9A	1	000-024-720	LINK ASSY, UPPER (includes 6, 9, 10, & 51)	32	1	000-029-660	SHAFT
9A1	1	000-024-651	LINK ASSY, LOWER (includes: 9, 10 & 37)	33	2	919-005-600	RETAINING RING
10	4	900-110-121	SLEEVE BEARING, .628 X 3/4	34	2	948-983-212	WASHER, FLAT, 1-5/16 X 21/32 X .093
11	4	807-265-060	SETSCREW, 3/8 - 16 X 3/8	35	1	839-549-002	NUT, FLEX LOCK, ¼ - 20
12	1	000-024-606	UPPER SUPPORT	36	2	900-212-161	FLANGED BEARING, .753 X 1.003 X 1
13	16	937-000-000	RIVET, STEEL, 1/4 X 11/32	37	2	900-112-161	SLEEVE BEARING, .753 X 1
14	1	710-501-007	GREASE FITTING	38	1	070-011-040	RATCHET ROLLER
15	1	000-024-647	ROLLER	39	1	809-865-445	SCREW, HEX, 3/8 - 16 X 2¾
15A	1	000-024-650	ROLLER ASSEMBLY (includes 15 & 16)	40	1	919-005-200	RETAINING RING
16	1	900-206-081	FLANGED BEARING, .378 X .688 X 1/2	41	1	070-008-215	BELT TIGHTENER WELDMENT
17	4	856-070-002	NUT, FLANGED, 7/16 - 20	41A	1	070-011-041	BELT TIGHTENER WELDMENT ASSEMBLY (includes 36 & 41)
18	1	000-024-607	TUBE	41A1	1	070-011-042	BELT TIGHTENER ASSEMBLY (includes 30A, 31, 35, 38, 40, 41A, 42, 44, 49, & 50)
18A	1	070-011-004	TUBE & SUPPORT ASSY (incl. 7, 12, 13, & 18)				
19	1	000-024-648	PIVOT PIN				

* Items 3 & 4 vary in length according to the space between the right and left pinspotters.





POSITIVE BALL LIFT (PBL) – EXPLODED VIEW (continued)

QubicaAMF XLi PINSPOTTER

ITEM	QTY	PART #	DESCRIPTION	ITEM	QTY	PART #	DESCRIPTION
42	1	070-008-217	SHORT SPACER	66	2	090-003-401	CLUTCH RACE, LONG
43	1	900-208-161	FLANGED BEARING, .503 x .875 x 1	67	1	070-011-796	LOWER SHAFT
44	1	146-005-277	WASHER, COUNTERSUNK, 9/32 x 7/8 x 1/8	N/A		700-107-146	ADHESIVE, LOCTITE TL242 (apply to items 11 and 22)
45	1	000-028-737	SHAFT				
46	1	000-024-603	SPRING				
47	1	000-024-608	UPPER RETAINER				
48	1	000-024-605	LOWER RETAINER				
49	1	808-849-565	SCREW, FLAT HEAD, ¼ - 20 X 3-1/2				
50	1	070-007-192	WASHER				
51	1	000-024-716	SPRING HOLDER				
52	2	000-027-996	RUBBER CUSHION				
53	1	831-566-002	NUT, HEX, 3/8 - 24				
54	2	000-027-998	RETAINER				
55	2	000-028-057	RETAINER				
56	2	070-008-212	SPACER				
57	1	070-008-211	SHEAVE				
58	1	000-024-811	PULLEY ASSEMBLY, R.H.				
59	1	839-665-002	NUT, FLEX LOCK, 3/8 - 16				
60	1	000-024-659	LOWER YOKE				
61	1	000-029-661	SHOCK ABSORBER				
61A	1	070-011-323	SHOCK ABSORBER ASSEMBLY (includes 5, 32, 33, 34, 52, 53, 54, 55, 56, & 61)				
62	6	000-027-642	WASHER				
63	2	070-007-291	CLUTCH BEARING				
64	1	000-024-812	PULLEY ASSEMBLY, L.H.				
65	1	070-008-210	SHEAVE				