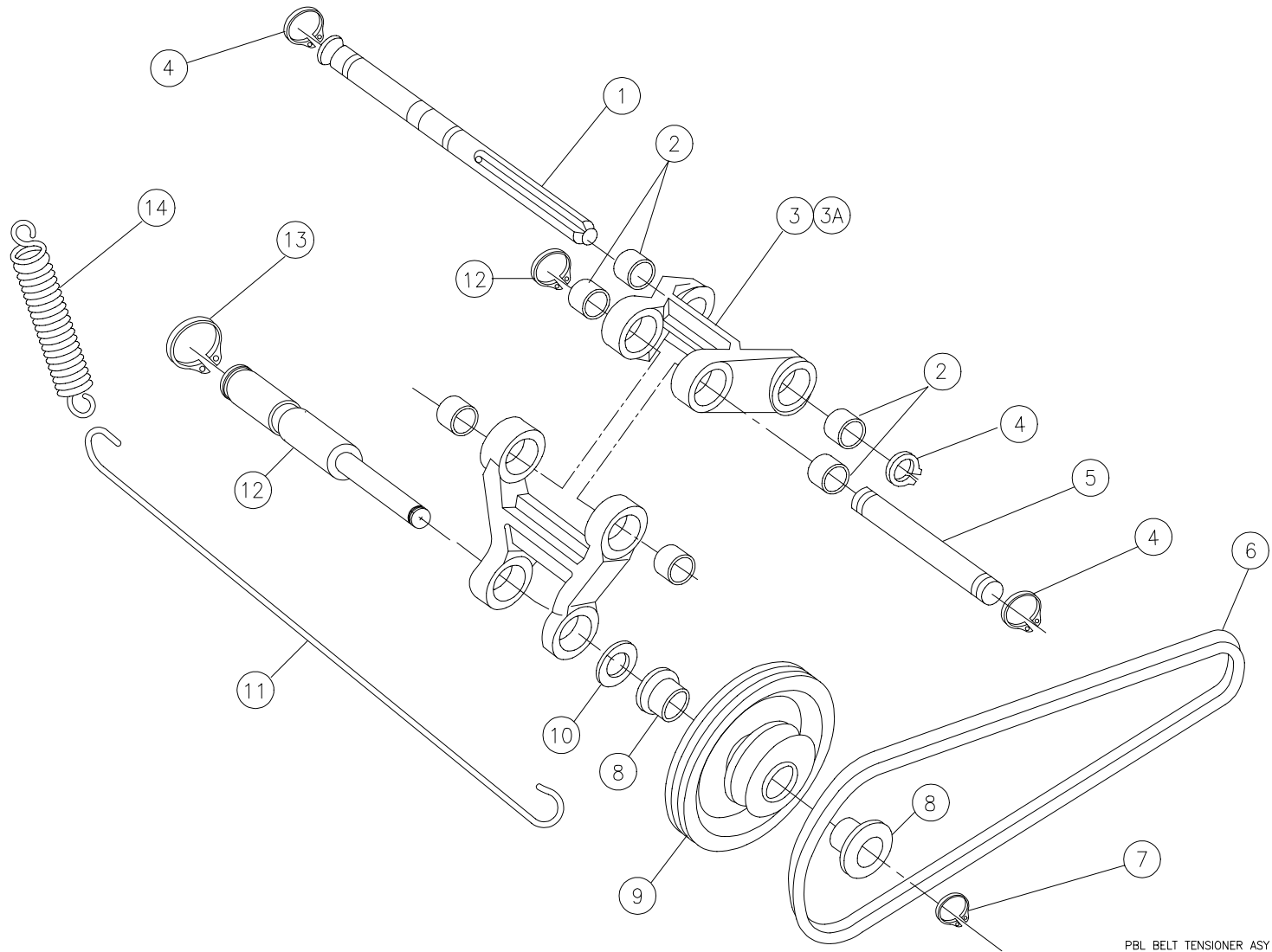


# PBL BELT TENSIONER ASSEMBLY



PBL BELT TENSIONER ASY



## PBL BELT TENSIONER ASSEMBLY

| ITEM | QTY | PART #      | DESCRIPTION                            |
|------|-----|-------------|--|
| 1    | 1   | 000-029-605 | PIVOT SHAFT                            |
| 2    | 6   | 900-110-081 | SLEEVE BEARING, .628 X .878 X .5       |
| 3    | 2   | 000-029-625 | HANGER ARM                             |
| 3A   | 1   | 000-029-659 | HANGER ARM ASSY (includes items 2 & 3) |
| 4    | 4   | 919-005-600 | RETAINING RING                         |
| 5    | 1   | 000-029-606 | PIVOT SHAFT, SHORT                     |
| 6    | 1   | 070-011-147 | V-BELT, PADDLE DRIVE, LOWER            |
| 7    | 1   | 919-005-500 | RETAINING RING                         |
| 8    | 2   | 900-208-120 | BEARING                                |
| 9    | 1   | 070-011-131 | PULLEY WELDMENT                        |
| 10   | 1   | 000-027-264 | SPACER                                 |
| 11   | 1   | 090-002-016 | SPRING EXTENSION                       |
| 12   | 1   | 090-002-014 | SHAFT                                  |
| 13   | 1   | 919-005-900 | RETAINING RING                         |
| 14   | 1   | 000-026-031 | SPRING                                 |

| ITEM | QTY | PART # | DESCRIPTION |
|------|-----|--------|-------------|
|------|-----|--------|-------------|