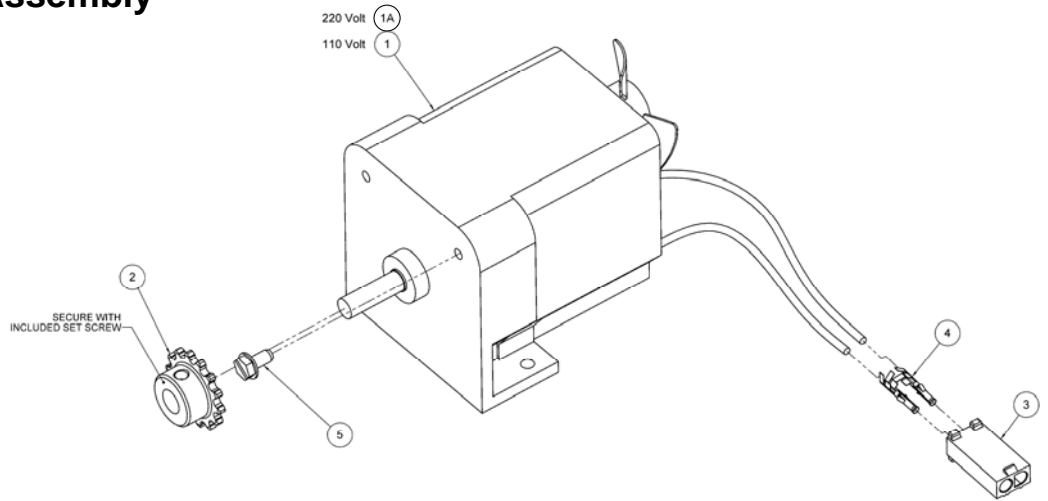


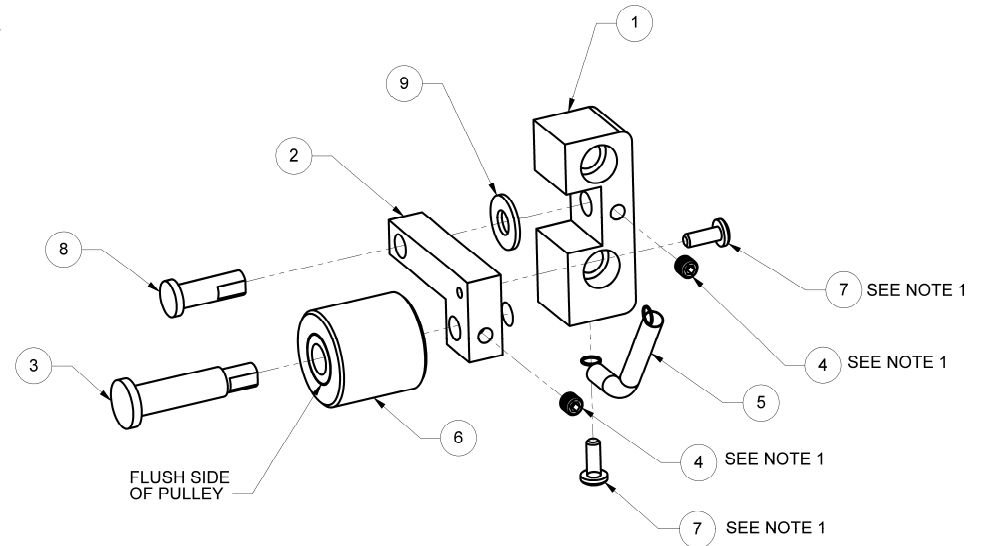
Oiling & Buffing System – Transfer Roller Motor Assembly

	NUMBER	DESCRIPTION
1	294-115-558	Transfer Roller Motor, 110-Volt
1A	294-115-559	Transfer Roller Motor, 220-Volt
2	294-001-006	Sprocket & Set Screw
3	746-013-498	Molex Connector
4	760-019-223	Female Crimp Terminal
5	294-115-292	Screw, Hex Washer Head, 10-32 x 3/8, Green



Oiling & Buffing System – Belt Tensioner Assembly

	NUMBER	DESCRIPTION
1	294-115-140	Belt Tensioner Mount
2	294-115-204	Idler Pivot Arm
3	A-5556	Roller Pin
4	01-029	Set Screw, 10-32 x 3/16
5	A-5558	Idler Spring
6	294-115-496	Tension Pulley Assembly
7	01-001	Screw, Round Head, 6-32 x 3/8
8	A-5557	Pivot Arm Pin
9	01-036	Washer, 3/16, Flat



NOTES:

1. APPLY LOCTITE 242 TO SCREWS AS INDICATED.
ENSURE NO LOCTITE GETS ON THE PINS (A-5556 & A-5557).