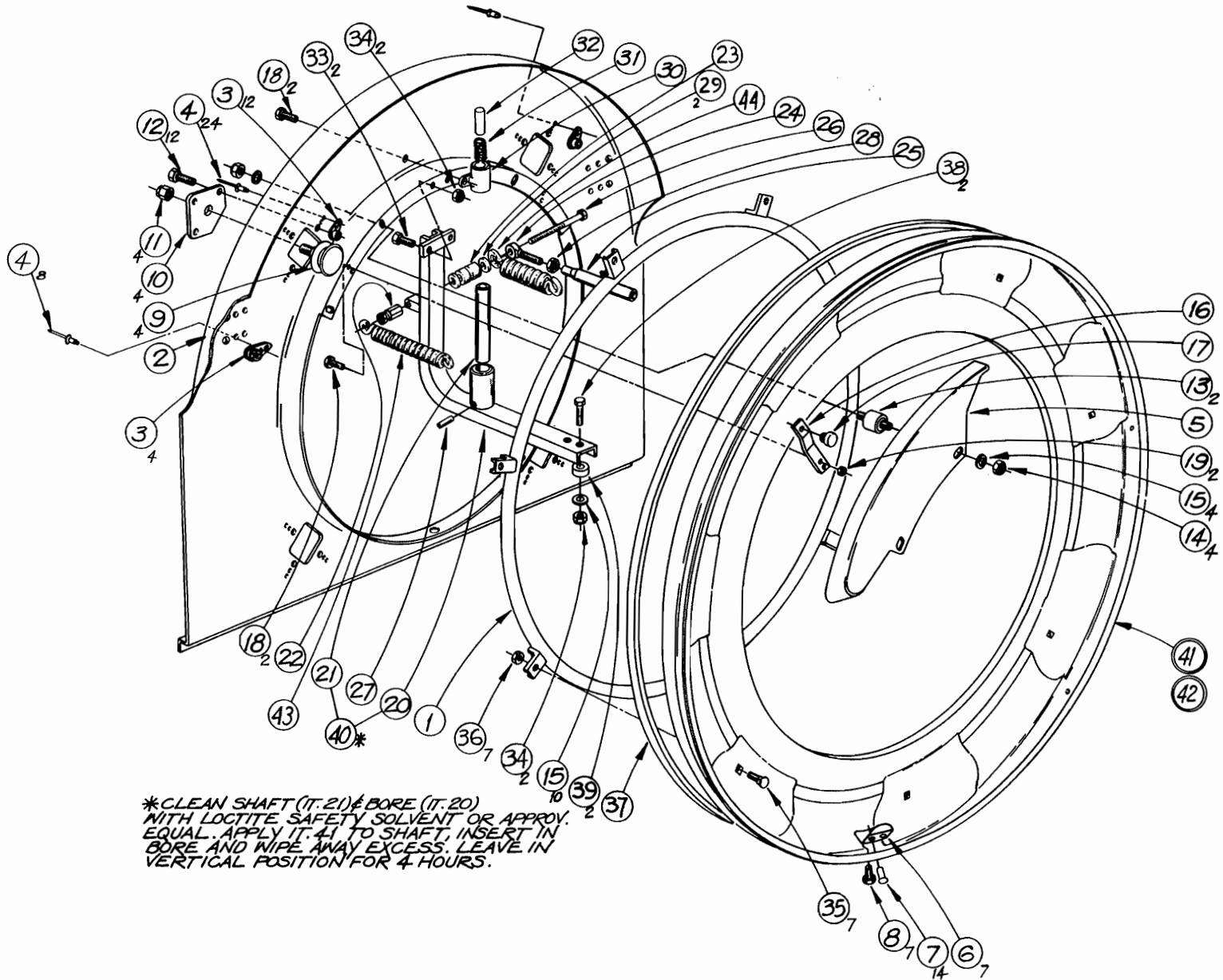


PIN ELEVATOR ASS'Y.

Ref. Dwgs.: 070-006-094-R.H. (Shown)
070-006-194-L.H.

ITEM	PART NUMBER	DESCRIPTION	ITEM	PART NUMBER	DESCRIPTION
1	000 020 855	Ring Weldment	22	070 006 044	Spring Post Nut
2	070 001 207	Wheel Guard	23	070 006 043	Spacer Clamp
3	830 358 002	Anchor Nut - ESNA - $\frac{5}{16}$ -24	24	070 006 046	Rod End
4	938 523 030	Pop Rivet - SD-43-BS	25	070 006 047	Safety Link Tube
5	070 006 098	Rail - R.H.	26	809 865 725	Hx. Hd. Scr. - $\frac{3}{8}$ -16 x 4 $\frac{1}{2}$ -GR 8
5a	070 006 099	Rail - L.H. (Not Shown)	27	913 437 280	Roll Pin - $\frac{3}{16}$ Dia. x 1 $\frac{3}{4}$ LG.-Steel
6	000 025 331	Pin Holding Bracket - R.H.	28	831 566 002	Nut- $\frac{3}{8}$ -24-SAE 2
6a	000 025 330	Pin Holding Brk't. - L.H. (Not Shown)	29	948 767 132	Plain Washer - $\frac{13}{16}$ x $\frac{13}{32}$ x $\frac{1}{16}$
7	938 537 060	Pop Rivet OMED- $\frac{3}{16}$ Dia.	30	000 029 201	Oiler Body
8	809 858 085	Hex Hd. Cap Scr. - $\frac{5}{16}$ -24 x $\frac{1}{2}$ - GR. 8	31	000 029 202	Spring
9	000 021 211	Roller	32	000 029 203	Wick
10	000 021 210	Plate	33	809 857 165	Hx. Hd. Cap Scr. - $\frac{5}{16}$ -18 x 1
11	844 074 002	Nut - Stover- $\frac{1}{2}$ -20	34	844 057 002	Stover Nut - $\frac{5}{16}$ -18
12	809 858 125	Hx. Hd. Cap Scr. $\frac{5}{16}$ -24 x $\frac{3}{4}$ - GR. 8	35	000 027 014	Bolt - $\frac{1}{4}$ -28 x $\frac{7}{8}$
13	000 029 068	Rubber Mount	36	844 050 002	Nut - Flex Lock $\frac{1}{4}$ -28
14	834 557 002	Hx. Nut-Reg. $\frac{5}{16}$ -18	37	070 002 005	V-Belt
15	948 761 112	Plain Washer - $\frac{11}{16}$ x $\frac{11}{32}$ x $\frac{1}{16}$	38	810 257 445	Hx. Hd. Cap Scr. - $\frac{5}{16}$ -18 x 2 $\frac{3}{4}$
16	070 001 415	Bracket	39	070 008 449	Shim
17	000 021 992	Bumper	40	700 107 170	Loctite #601 Adhesive
18	809 849 125	Hx. Hd. Cap Scr. $\frac{1}{4}$ -20 x $\frac{3}{4}$ -GR. 8.	41	070 001 129	Pin Wheel Ass'y. R.H. (Shown)
19	844 049 002	Nut-Stover- $\frac{1}{4}$ -20-GR. C	42	070 002 106	Pin Wheel Ass'y. L.H.
20	070 007 357	Channel Supp't. Weld.	43	000 026 032	Spring, Lateral Drive
21	070 006 045	Distributor Supp't.	44	000 006 030	Spring, Safety Link
			45	070-006-143	Spacer (Not Shown)

PIN ELEVATOR ASS'Y.
 REF. DWGS.: 070-006-094-R.H. (SHOWN)
 070-006-194-L.H.



*CLEAN SHAFT (IT.21) & BORE (IT.20)
 WITH LOCTITE SAFETY SOLVENT OR APPROV.
 EQUAL. APPLY IT. 41 TO SHAFT, INSERT IN
 BORE AND WIPE AWAY EXCESS. LEAVE IN
 VERTICAL POSITION FOR 4 HOURS.