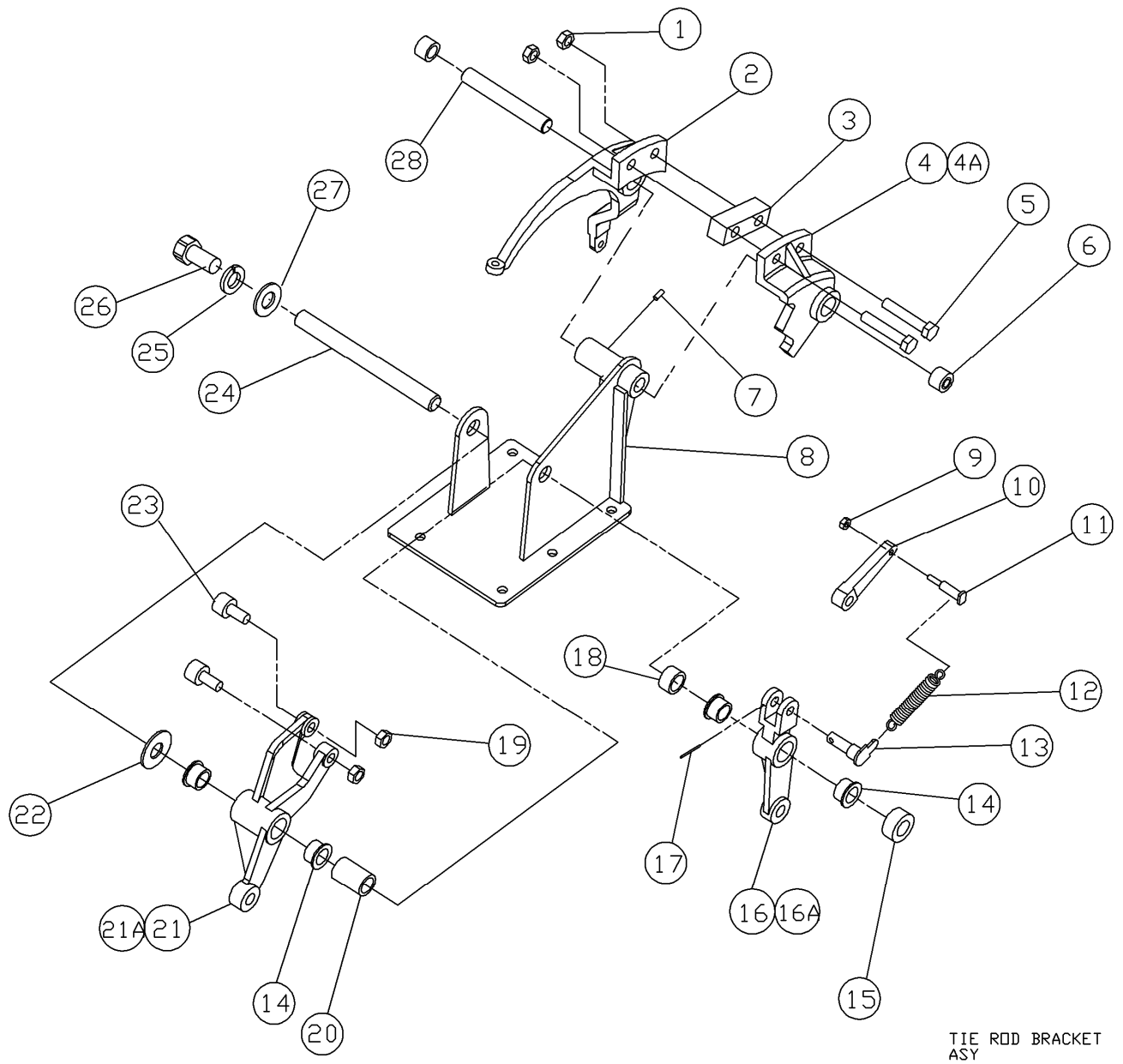


TIE ROD BRACKET ASSEMBLY



TIE ROD BRACKET
ASY



TIE ROD BRACKET ASSEMBLY

ITEM	QTY	PART #	DESCRIPTION	ITEM	QTY	PART #	DESCRIPTION
1	2	844-065-002	NUT, STOVER LOCK, 3/8 - 16	24	1	090-005-655	SHAFT
2	1	070-002-725	CAM LINK	25	1	951-164-002	WASHER, SPLIT LOCK, 3/8
3	1	090-005-520	SPACER	26	1	809-865-125	SCREW, HEX, 3/8 - 16 X 3/4
4	1	070-002-724	SHIFTER LINK	27	1	948-767-132	WASHER, FLAT, 13/32 X 13/16 X 1/16
4A	1	070-002-727	SHIFTER LINK & BEARING ASSY (incl. 4 & 6)	28	1	090-005-521	SHAFT, SHORT SIDE
5	2	809-865-325	SCREW, HEX, 3/8 - 16 X 2				
6	2	070-002-781	NEEDLE BEARING				
7	1	807-249-060	SETSCREW, 1/4 - 20 X 3/8				
8	1	088-005-503	TIE ROD BRACKET				
9	1	843-140-002	NUT, HEX LOCK, 10 - 32				
10	1	070-002-590	FINGER LINK				
11	1	090-005-629	PIN				
12	1	070-001-807	RESPOT LEVER SPRING				
13	1	090-005-631	PIVOT WELDMENT				
14	4	070-002-745	FLANGED BEARING, .6265 X .814 X 1/2				
15	1	000-021-423	SHAFT COLLAR				
16	1	070-002-589	FINGER LEVER				
16A	1	070-002-579	FINGER LEVER ASSY (includes 14 & 16)				
17	1	913-423-120	SPRING PIN				
18	1	090-005-533	SPACER				
19	2	840-066-002	NUT, FLEX LOCK, THIN, 3/8 - 24				
20	1	090-005-532	SPACER				
21	1	070-002-599	SPOT LEVER				
21A	1	070-002-578	SPOT LEVER ASSEMBLY (incl. 14 & 21)				
22	1	948-983-212	WASHER, FLAT, 21/32 X 1-5/16				
23	2	070-002-816	CAM FOLLOWER				