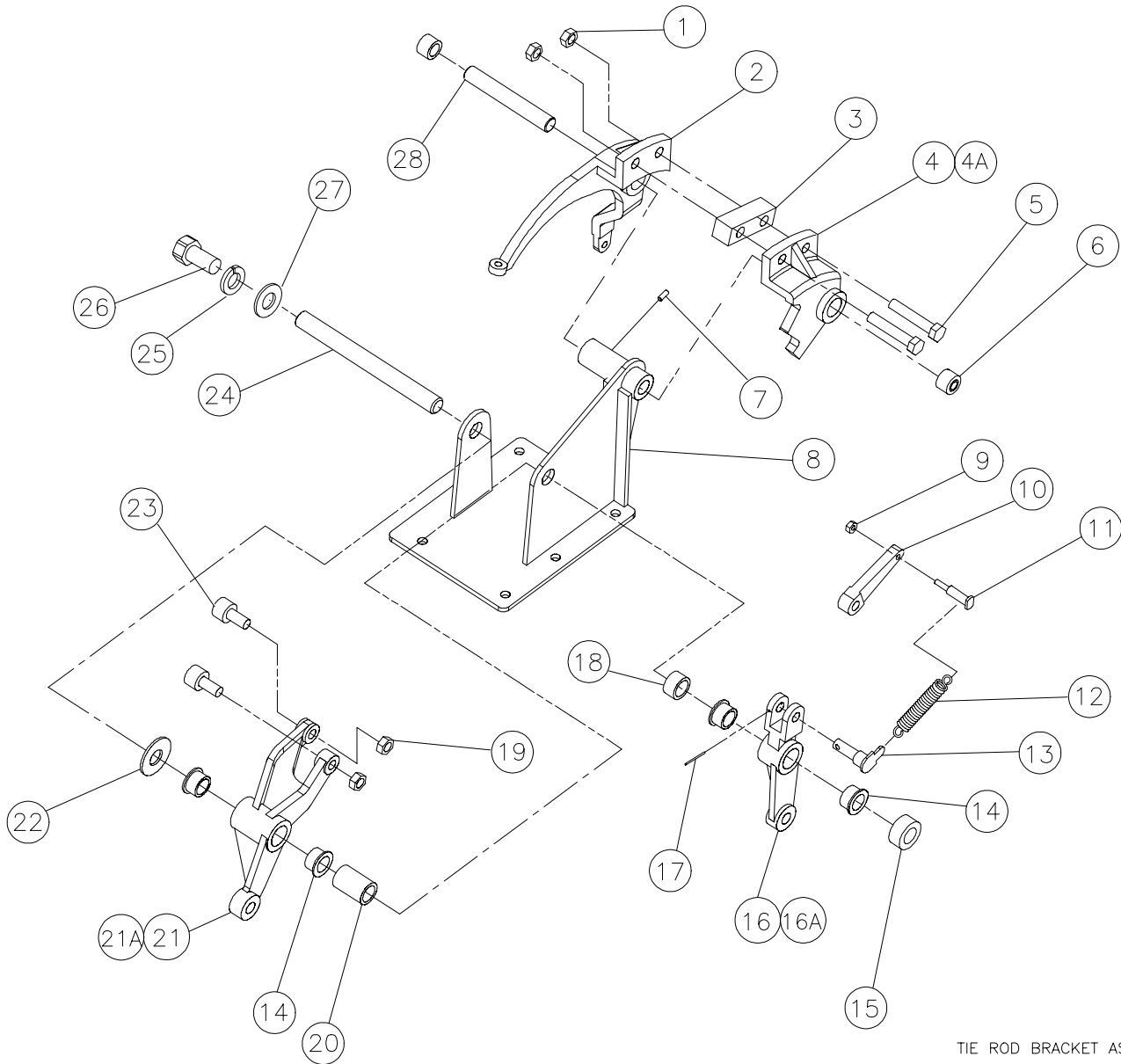


TIE ROD BRACKET ASSEMBLY



TIE ROD BRACKET ASY



TIE ROD BRACKET ASSEMBLY

ITEM	QTY	PART #	DESCRIPTION
1	2	844-065-002	NUT, STOVER LOCK, 3/8 - 16
2	1	070-002-725	CAM LINK
3	1	090-005-520	SPACER
4	1	070-002-724	SHIFTER LINK
4A	1	070-002-727	SHIFTER LINK & BEARING ASSY (incl. 4 & 6)
5	2	809-865-325	SCREW, HEX, 3/8 - 16 X 2
6	2	070-002-781	NEEDLE BEARING
7	1	807-249-060	SETSCREW, 1/4 - 20 X 3/8
8	1	090-005-526	TIE ROD BRACKET
9	1	843-140-002	NUT, HEX LOCK, 10 - 32
10	1	070-002-590	FINGER LINK
11	1	090-005-629	PIN
12	1	070-001-807	RESPOT LEVER SPRING
13	1	090-005-631	PIVOT WELDMENT
14	4	070-002-745	FLANGED BEARING, .6265 X .814 X 1/2
15	1	000-021-423	SHAFT COLLAR
16	1	070-002-589	FINGER LEVER
16A	1	070-002-579	FINGER LEVER ASSY (includes 14 & 16)
17	1	913-423-120	SPRING PIN
18	1	090-005-533	SPACER
19	2	840-066-002	NUT, FLEX LOCK, THIN, 3/8 - 24
20	1	090-005-532	SPACER
21	1	070-002-599	SPOT LEVER
21A	1	070-002-578	SPOT LEVER ASSEMBLY (incl. 14 & 21)
22	1	948-983-212	WASHER, FLAT, 21/32 X 1-5/16
23	2	070-002-816	CAM FOLLOWER

ITEM	QTY	PART #	DESCRIPTION
24	1	090-005-655	SHAFT
25	1	951-164-002	WASHER, SPLIT LOCK, 3/8
26	1	809-865-125	SCREW, HEX, 3/8 - 16 X 3/4
27	1	948-767-132	WASHER, FLAT, 13/32 X 13/16 X 1/16
28	1	090-005-521	SHAFT, SHORT SIDE