

## YOKE AND SPOTTING CUP ASS'Y.

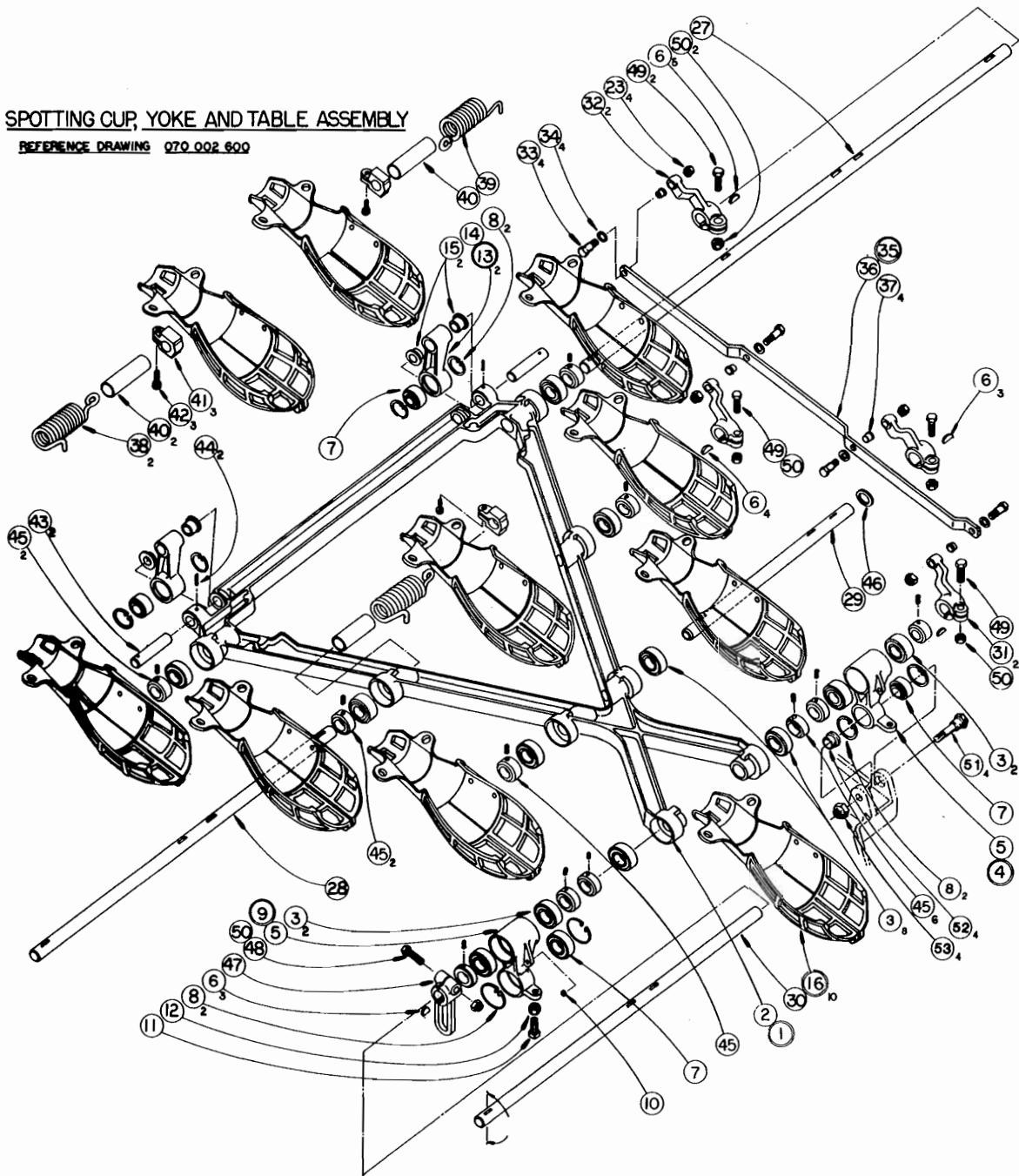
070-002-600

ITEM	PART NUMBER	DESCRIPTION	ITEM	PART NUMBER	DESCRIPTION
1	070-002-623	Yoke and Bearing Ass'y.	26	070-002-788	Cap
*2	070-002-683	Yoke	27	070-002-618	Shaft #4
3	190-001-490	Bearing	28	070-002-617	Shaft #3
4	070-002-663	Front Leg Ass'y. R.H. (W/Items 3,5,7,8)	29	070-002-616	Shaft #2
5	070-002-667	Leg	30	070-002-615	Shaft #1
6	907-000-600	Key - "Hi-Pro" #706	31	070-002-602	Lever - Inner
7	070-002-698	Bushing - Spherical	32	070-002-603	Lever - Outer
8	919-000-700	Retaining Ring (N-5000-156)	33	070-002-723	Pin
9	070-002-664	Front Leg Ass'y. L.H. (With Items 3, 5, 7, 8, 10, 11, 12)	34	701-310-036	Thrust Bearing
10	724-517-107	Ring Compression (Tinn. C 2122-025)	35	070-002-612	Tie Link Ass'y.
11	806-265-240	Set Screw Sq. Hd. Cup Point $\frac{3}{8}$ -16 x $1\frac{1}{2}$ LG.	36	070-002-611	Link
12	835-565-002	Jam Nut Cad PL $\frac{3}{8}$ -16 N.C.	37	900-205-053	Flange Bearing
13	070-002-665	Rear Leg Ass'y. (W/Items 7, 8, 14, 15)	38	070-002-688	Spring R.H.
14	070-002-666	Leg - Rear	39	070-002-689	Spring L.H.
15	000-023-114	Flanged Bushing	40	070-002-719	Spring Sleeve
16	070-002-808	Spotting Cup Ass'y.	41	070-002-608	Collar Spring
17	070-002-809	Spotting Cup	42	810-258-160	Screw Soc. Hd. Cap $\frac{5}{16}$ -24 x 1
18	070-002-784	Liner	43	070-002-609	Pin
19	070-002-798	Retainer	44	913-437-240	Roll Pin .187 x $1\frac{1}{2}$
20	070-002-787	"U" Bolt	45	000-025-549	Collar With Set Screw
21	070-002-818	Washer	46	070-002-620	Spacer
22	810-249-200	Screw Soc. Hd. Cap. $\frac{1}{4}$ -20 x $1\frac{1}{4}$	47	070-002-624	Arm-Actuator
23	844-049-002	Stover Lock Nut $\frac{1}{4}$ -20	48	809-865-365	Screw-Hex Hd. Cap $\frac{3}{8}$ -16 x $2\frac{1}{4}$
24	839-057-002	Nut ESNA $\frac{5}{16}$ -18	49	809-865-245	Screw-Hex Hd. Cap $\frac{3}{8}$ -16 x $1\frac{1}{2}$
25	948-761-112	Washer, Pln. $1\frac{1}{16}$ O.D. x $1\frac{1}{32}$ I.D. x $\frac{1}{16}$ THK.	50	839-665-002	Stover Locknut $\frac{3}{8}$ -16
			51	070-002-701	Stud
			52	070-002-573	Spacer
			53	840-381-002	Nut $\frac{5}{8}$ -11 Flex Lock

\* For Yoke (Cracked) Repair Kit Order 610-704-011.

**SPOTTING CUP, YOKE AND TABLE ASSEMBLY**

REFERENCE DRAWING 070 002 600



**SPOTTING CUP ASSEMBLY**  
070 002 808

