

TABLE DRIVE ASSEMBLY

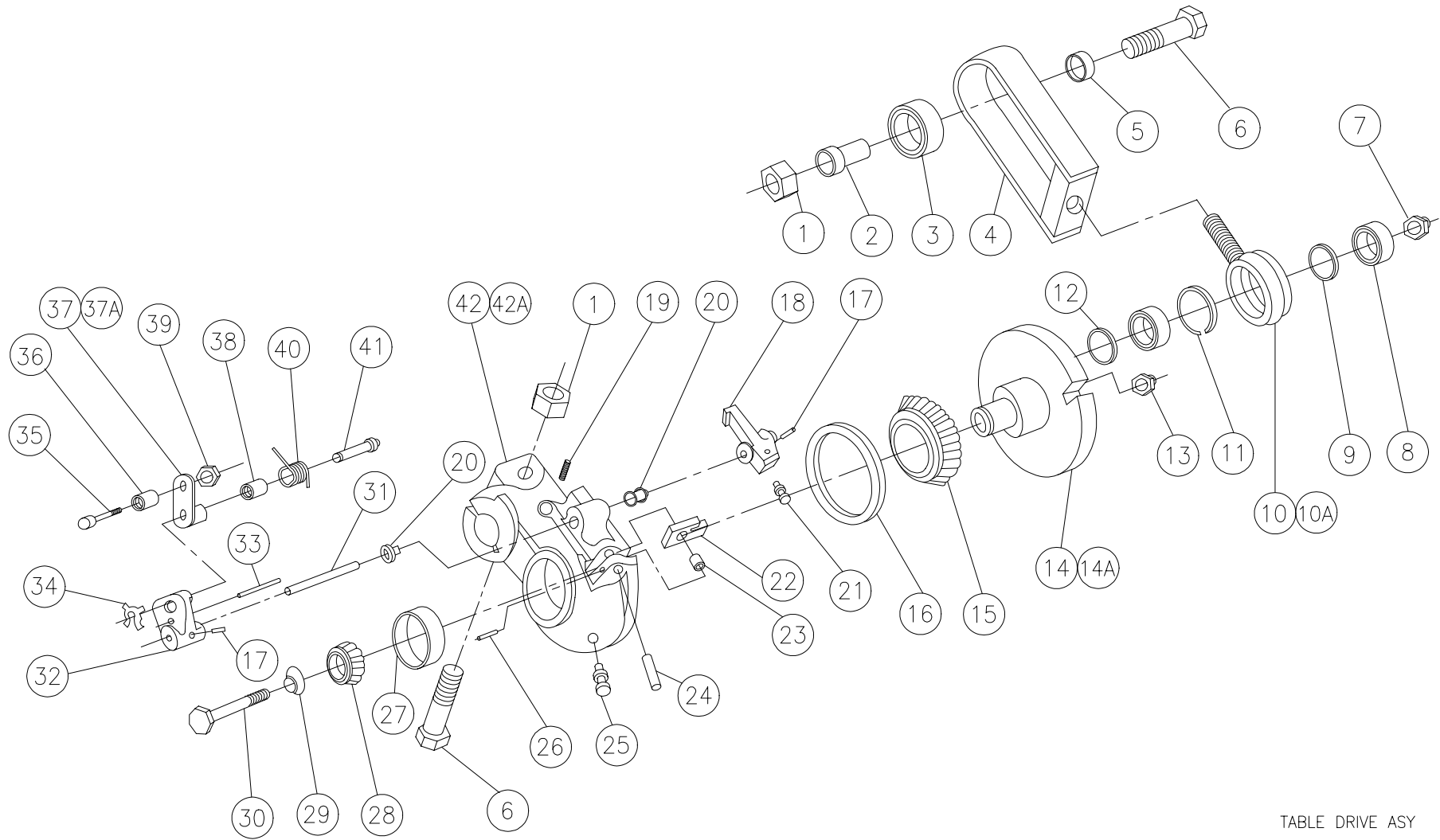


TABLE DRIVE ASY



TABLE DRIVE ASSEMBLY

ITEM	QTY	PART #	DESCRIPTION
1	2	844-073-002	NUT, STOVER LOCK, 1/2 - 13
2	1	070-007-310	FLANGED BEARING, .502 X .871 X 1.20
3	1	190-001-490	BALL BEARING
4	1	070-007-755	YOKE WELDMENT
5	1	070-007-311	SLEEVE, TABLE DRIVE ASSEMBLY
6	2	809-873-405	SCREW, HEX, 1/2 - 13 X 2-1/2
7	1	840-182-002	NUT, FLEX LOCK
8	2	000-021-881	BALL BEARING, .625 X 1.375
9	1	000-021-878	SPACER ROD ASSEMBLY
10	1	000-021-879	ROD END
10A	1	000-021-880	ROD END ASSEMBLY (includes 8, 10 & 11)
11	1	919-000-600	RETAINING RING
12	1	070-001-849	WASHER, 1 X 5/8 X 1/8
13	1	840-070-002	NUT, FLEX LOCK, 7/16 - 20
14	1	090-005-549	TABLE DRIVE ECCENTRIC
14A	1	070-002-799	ECCENTRIC & CONE ASSY (includes 14 & 15)
15	1	070-002-776	CONE-STYLE ROLLER BEARING
16	1	070-002-777	BEARING CUP
17	2	913-423-120	SPRING PIN, .125 X 3/4
18	1	070-008-321	LATCH ARM ASSY (1/8" SPRING PIN HOLE)
19	1	070-001-917	COMPRESSION SPRING
20	2	900-205-053	FLANGED BEARING .315 X .44 X 5/16
21	1	070-001-893	CAM BALL ASSEMBLY
22	1	070-001-918	LATCH ASSEMBLY
23	1	900-104-071	SLEEVE BEARING, .253 X 7/16
24	1	070-001-894	PIVOT PIN

ITEM	QTY	PART #	DESCRIPTION
25	1	710-501-004	GREASE FITTING
26	1	913-415-120	SPRING PIN, .094 X 3/4
27	1	070-002-780	ROLLER BEARING CUP
28	1	070-002-824	CONE & SEAL BEARING ASSEMBLY
29	1	070-006-729	SPRING DISC
30	1	809-870-325	SCREW, HEX, 7/16 - 20 X 2
31	1	070-008-325	PIN ACTUATOR ASSEMBLY
32	1	070-008-322	LINK ACTUATOR ASSEMBLY
33	1	912-137-200	GROOVE PIN, 1/16 X 1-1/4
34	1	963-300-002	X-WASHER
35	1	880-139-120	SHOULDER SCREW, 10 - 24 X 1/4 X 3/8
36	1	070-001-857	NYLON ROLLER
37	1	070-001-861	LINK & HUB ASSEMBLY
37A	1	070-007-250	LINK ASSEMBLY (includes items 37 & 38)
38	1	070-002-652	BUSHING .252 X .315 X .5
39	1	839-539-002	NUT, FLEX LOCK, 10 - 24
40	1	070-001-931	SPRING
41	1	070-001-932	PIN
42	1	070-001-889	TABLE DRIVE CRANK HOUSING
42A	1	070-002-778	CRANK HOUSING & CUP ASSEMBLY (includes items 16, 20, 25, 27, & 42)