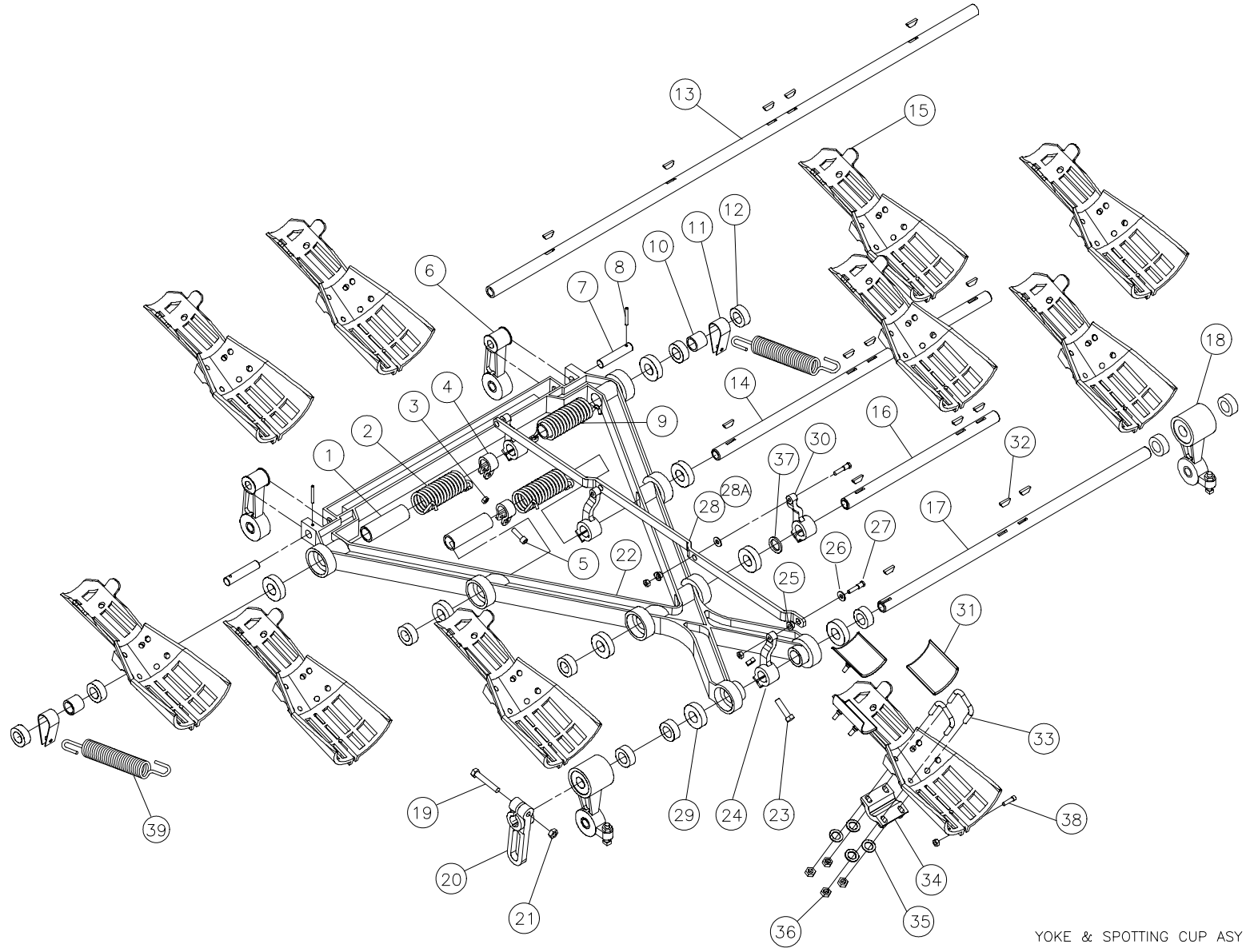


# YOKE & SPOTTING CUP ASSEMBLY



YOKE & SPOTTING CUP ASY



## YOKE & SPOTTING CUP ASSEMBLY

ITEM	QTY	PART #	DESCRIPTION
1	3	070-002-719	SPRING SLEEVE
2	2	070-002-688	SPRING, R.H. WOUND, L.H. SIDE
3	17	844-049-002	NUT, STOVER LOCK, 1/4 - 20
4	3	090-004-033	CLAMP
5	3	809-849-165	SCREW, HEX, 1/4 - 20 X 1
6	2	090-005-548	REAR LEG ASSEMBLY
7	2	070-002-609	PIN
8	2	913-437-240	SPRING PIN, 3/16 X 1-1/2
9	1	070-002-689	SPRING, L.H. WOUND, R.H. SIDE
10	2	900-114-161	BEARING, 7/8 X 1-1/8 X 1
11	2	090-005-577	SPRING HOOK
12	12	000-025-549	LOCK COLLAR WITH SETSCREW
13	1	090-005-578	SHAFT #4
14	1	070-002-617	SHAFT #3
15	10	070-002-809	SPOTTING CUP
16	1	070-002-616	SHAFT #2
17	1	090-005-553	SHAFT #1
18	2	090-005-545	FRONT LEG ASSEMBLY
19	1	809-865-365	SCREW, HEX, 3/8 - 16 X 1-1/2
20	1	090-005-554	ARM ACTUATOR
21	5	839-665-002	NUT, FLEX LOCK, 3/8 - 16
22	1	070-002-683	YOKE
23	4	809-865-245	SCREW, HEX, 3/8 - 16 X 1-1/2
24	2	070-002-602	INNER LEVER
25	4	900-205-053	FLANGED BEARING, .315 x .44 x 5/16
26	4	701-310-036	THRUST BEARING

ITEM	QTY	PART #	DESCRIPTION
27	4	070-002-723	PIN
28	1	070-002-611	LINK
28A	1	070-002-612	LINK ASSEMBLY (includes: 25 & 28)
29	8	190-001-490	BALL BEARING, .875 X 1.875 X .5
30	2	070-002-603	OUTER LEVER
31	30	070-002-784	SPOTTING CUP LINER
32	15	907-000-600	KEY
33	20	070-002-787	U-BOLT
34	10	070-002-788	CAP
35	40	948-761-112	WASHER, FLAT, 11/32 X 1-1/16 X 1/16
36	40	844-057-002	NUT, STOVER LOCK, 5/16 - 18
37	1	070-002-620	SPACER
38	10	810-249-200	SCREW, SOCKET HEAD CAP, 1/4 - 20
39	2	000-026-032	SPRING