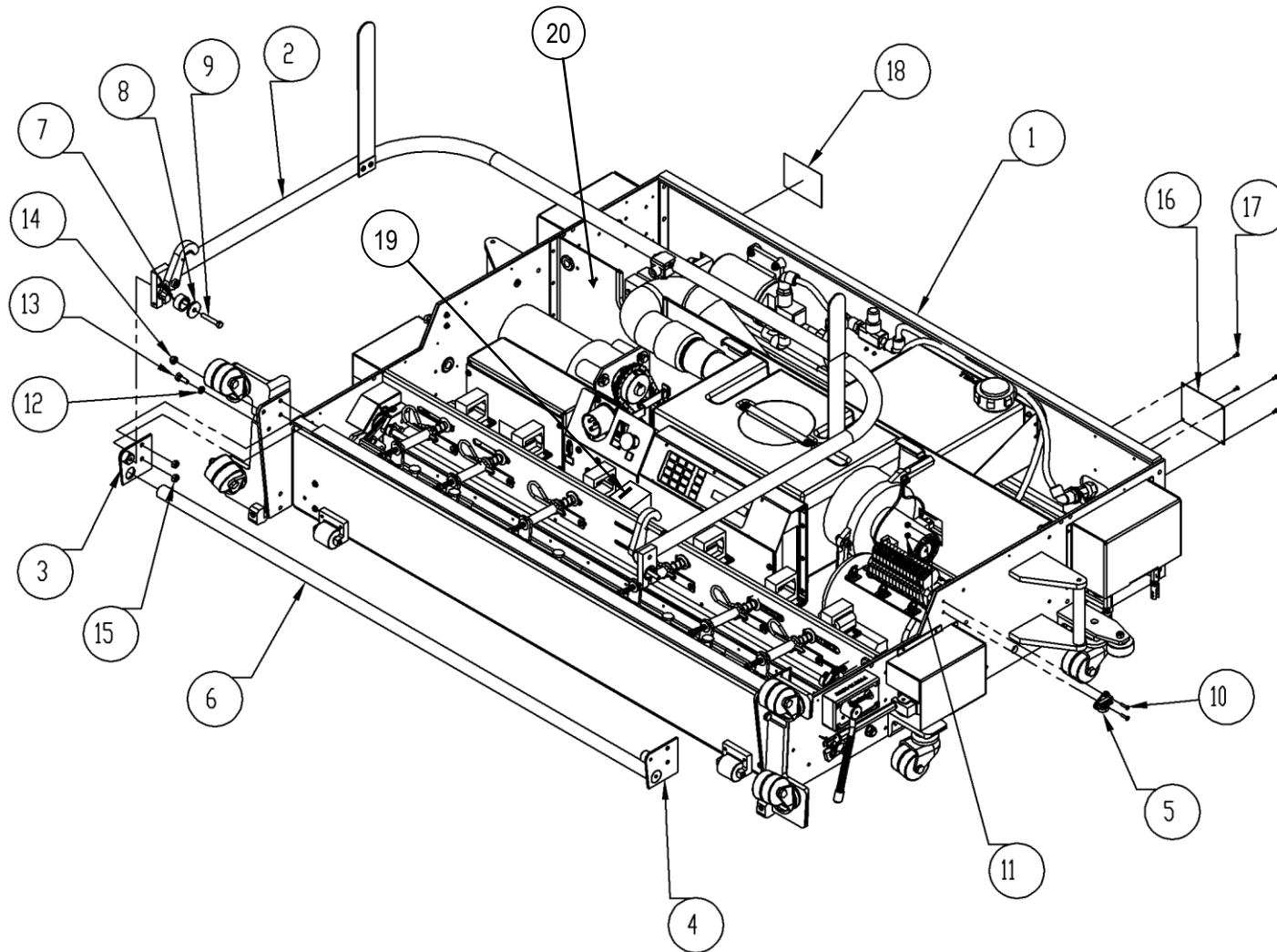


# FINAL ASSEMBLY



## FINAL ASSEMBLY

	PART NO.	DESCRIPTION	QTY
1	294-002-417	BODY ASSEMBLY	1
2	294-002-416	HANDLE ASSEMBLY	1
3	294-002-028	HANDLE PIVOT, LEFT	1
4	294-002-029	HANDLE PIVOT, RIGHT	1
5	A-2037	POWER CABLE HOOK	2
6	B-5012	REAR HANDLE	1
7	A-0453	HANDLE PIVOT BUSHING	2
8	A-0444	HANDLE PIVOT WASHER	2
9	01-253	SCREW, 1/2-20 X 1 1/2, HEX HEAD, ZINC	2
10	812-027-100	SCREW, 6-32 X 5/8 FLAT HEAD	4
11	01-416	NUT, #6-32, NYLON LOCK, ZINC	4
12	01-054	WASHER, 1/4, SPLIT, ZINC	2
13	01-046	SCREW, 1/4-20 X 3/4, HEX HEAD, ZINC	2
14	01-051	NUT, 1/4-20, NYLON LOCK, ZINC	2
15	01-052	NUT, 1/4-20, HEX, ZINC	4
16	A-0580	SERIAL NUMBER PLATE	1
17	01-089	RIVET, 1/8 X 1/4, AL	4
18	A-5574	DECAL - USA FLAG	1
19	294-002-224	SAFETY INTERLOCK SWITCH (220V ONLY)	1
20	294-002-507	RELAY, 12VDC, 30 AMP (Not Shown)	1