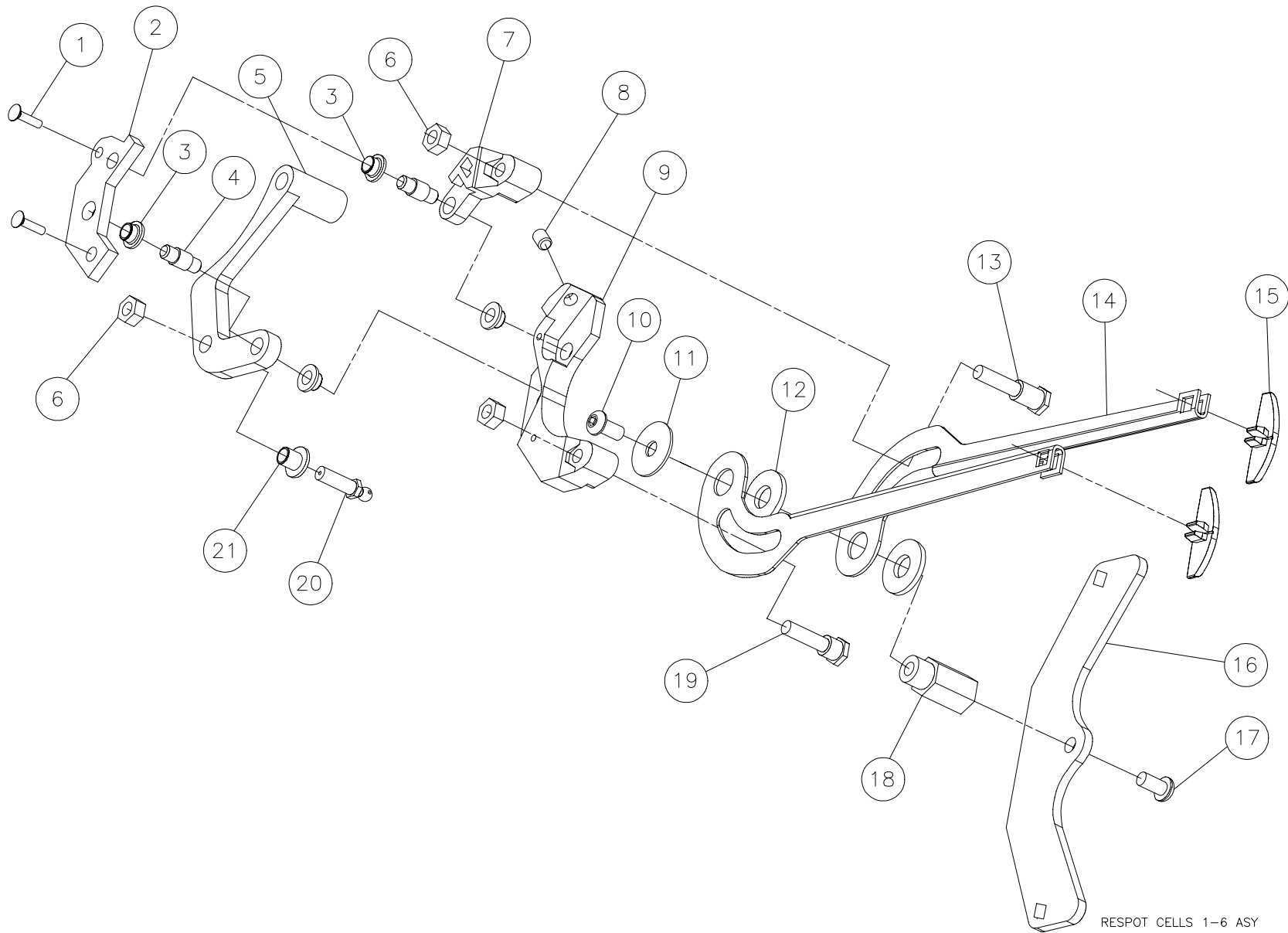


RESPOT CELL ASSEMBLY, CELLS 1 THROUGH 6



RESPOT CELLS 1-6 ASY



RESPOT CELL ASSEMBLY, CELLS 1 THROUGH 6

ITEM	QTY	PART #	DESCRIPTION
1	2	070-002-750	SCREW, FLAT HEAD
2	1	070-002-695	YOKE PLATE
3	4	070-002-630	FLANGED BEARING, .252 X .315 X .218
4	2	070-002-645	LEVER ASSEMBLY SHAFT
5	1	070-002-651	RESPOT LEVER
6	2	844-049-002	NUT, STOVER LOCK, 1/4 - 20
7	1	090-004-113	RESPOT YOKE ARM
8	1	807-650-050	SETSCREW, 1/4 - 28 X 5/16
9	1	090-004-118	RESPOT YOKE
10	1	808-549-080	SCREW, BUTTON HEAD CAP, 1/4 - 20 X 1/2
11	1	070-007-192	WASHER
12	2	070-007-193	RESPOT CELL SPACER
13	1	090-005-640	STUD, LONG
14	2	090-004-119	RESPOT FINGER
15	2	090-005-617	FINGER INSERT
16	1	090-005-632	FINGER PIVOT WING
17	1	809-149-100	SCREW, BUTTON HD w/PATCH, 1/4 - 20 X 5/8
18	1	090-005-522	RESPOT FINGER BUSHING
19	1	070-007-195	STUD, SHORT
20	1	730-027-019	STUD, BALL HEAD
21	1	070-002-653	FLANGED BEARING, .252 X .315 X .38

ITEM	QTY	PART #	DESCRIPTION
------	-----	--------	-------------