

TABLE DRIVE ASSEMBLY

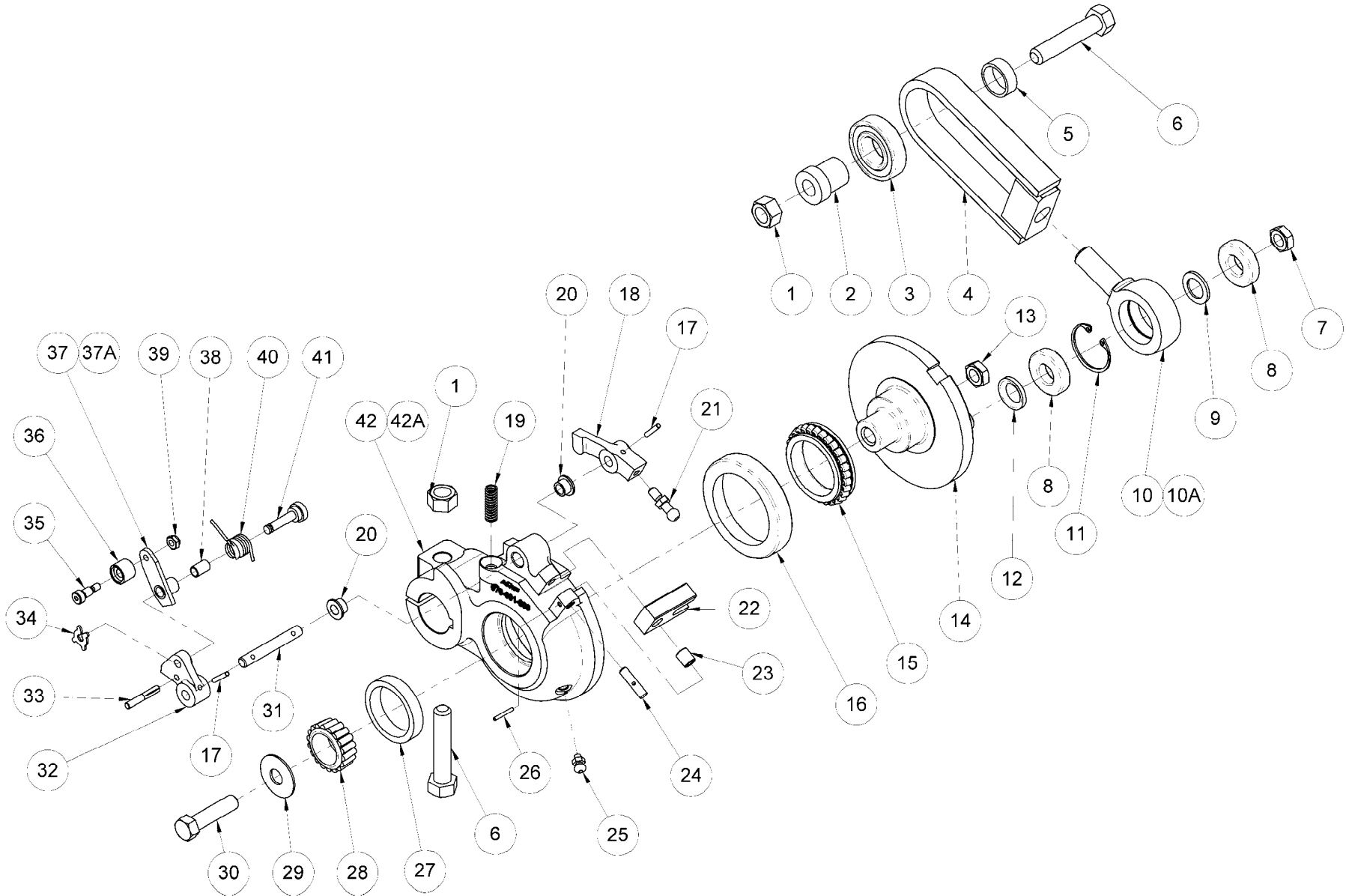




TABLE DRIVE ASSEMBLY

ITEM	QTY	PART #	DESCRIPTION	ITEM	QTY	PART #	DESCRIPTION
1	2	844-073-002	NUT, STOVER LOCK, 1/2 - 13	25	1	710-501-004	GREASE FITTING
2	1	070-007-310	FLANGED BEARING, .502 X .871 X 1.20	26	1	913-415-120	SPRING PIN, .094 X 3/4
3	1	190-001-490	BALL BEARING	27	1	070-002-780	ROLLER BEARING CUP
4	1	070-007-755	YOKE WELDMENT	28	1	070-002-824	CONE & SEAL BEARING ASSEMBLY
5	1	070-007-311	SLEEVE, TABLE DRIVE ASSEMBLY	29	1	070-006-729	SPRING DISC
6	2	809-873-405	SCREW, HEX, 1/2 - 13 X 2-1/2	30	1	809-870-325	SCREW, HEX, 7/16 - 20 X 2
7	1	840-182-002	NUT, FLEX LOCK	31	1	070-008-325	PIN ACTUATOR ASSEMBLY
8	2	000-021-881	BALL BEARING, .625 X 1.375	32	1	070-008-322	LINK ACTUATOR ASSEMBLY
9	1	000-021-878	SPACER	33	1	912-137-200	GROOVE PIN, 1/16 X 1-1/4
10	1	000-021-879	ROD END	34	1	963-300-002	X-WASHER
10A	1	000-021-880	ROD END ASSY (includes 8, 9, 10 & 11)	35	1	880-139-120	SHOULDER SCREW, 10 - 24 X 1/4 X 3/8
11	1	919-000-600	RETAINING RING	36	1	070-001-857	NYLON ROLLER
12	1	070-001-849	WASHER, 1 X 5/8 X 1/8	37	1	070-001-861	LINK & HUB ASSEMBLY
13	1	840-070-002	NUT, FLEX LOCK, 7/16 - 20	37A	1	070-007-250	LINK ASSEMBLY (includes items 37 & 38)
14	1	090-005-549	TABLE DRIVE ECCENTRIC	38	1	070-002-652	BUSHING .252 X .315 X .5
15	1	070-002-776	CONE-STYLE ROLLER BEARING	39	1	839-539-002	NUT, FLEX LOCK, 10 - 24
16	1	070-002-777	BEARING CUP	40	1	070-001-931	SPRING
17	2	913-423-120	SPRING PIN, .125 X 3/4	41	1	070-001-932	PIN
18	1	070-008-321	LATCH ARM ASSY (1/8" SPRING PIN HOLE)	42	1	070-001-889	TABLE DRIVE CRANK HOUSING
19	1	070-001-917	COMPRESSION SPRING	42A	1	070-002-778	CRANK HOUSING & CUP ASSEMBLY (includes items 16, 20, 25, 27, & 42)
20	2	900-205-053	FLANGED BEARING .315 X .44 X 5/16				
21	1	070-001-893	CAM BALL ASSEMBLY				
22	1	070-001-918	LATCH ASSEMBLY				
23	1	900-104-071	SLEEVE BEARING, .253 X 7/16				
24	1	070-001-894	PIVOT PIN				